



Horticultural News

Volume 100, Number 3
Summer, 2020

Horticultural News

Editors: Winfred P. Cowgill, Jr. & Wesley R. Autio

The New Jersey State Horticultural Society was organized on August 17, 1875 at Geological Hall, Rutgers College, New Brunswick, NJ. It remains the oldest Horticultural organization in New Jersey.

Horticultural News began as the *The New Jersey State Horticultural Society News*, in October of 1920. The Society began "collecting paid membership in order to obtain funds to promote new features of the society and extend the usefulness of the society. The Horticultural Society News was started to be the official society publication." Published M. A. Blake, Professor at Rutgers College was the first president and chair of the publication committee.



Editors served as follows:

MA Blake	1920 - 1947
Norman F Childers	1948 - 1980
Win Cowgill	1981 - 1988
Emily Brown Rosen	1988 - 1990
Linda Butenis Vorsa	1991 - 1995
Jerry Frecon	1995 - 2010

June 2010: *Horticultural News* has moved to an online web-based format. The New Jersey State Horticultural Society has partnered with the University of Massachusetts *Fruit Notes*, Dr. Wesley Autio, Editor. Cowgill and Autio will be the new editors of *Horticultural News* and *Fruit Notes*.

Horticultural News is distributed to growers, extension personnel and researchers and libraries across North America. Horticultural News focuses primarily on tree-fruit culture, but addresses small-fruit cultural issues as well. Most reports are from current research at Rutgers University, University of Massachusetts, and other universities.

Horticultural News is published four times per year by the New Jersey State Horticultural Society. It is provided as a benefit to membership in the society. Membership costs \$50 per year. Each one-year subscription begins January 1 and ends December 31. Payments via check must be in United States currency and should be payable to the New Jersey State Horticultural Society. Horticultural News Electronic subscriptions are available as benefit of membership in the NJ State Horticultural Society. A hidden link will be mailed immediately after publication to members. Issues will be made freely available on this website six months after publication.

Correspondence should be sent to: New Jersey State Horticultural Society
Greg Donaldson
176 Airport Road
Hackettstown, NJ 07840
TEL (908) 296-1064

For advertising opportunities, contact: Win Cowgill: wincowgill@mac.com; (908) 489-0207

Table of Contents

Controlling Plum Curculio Adults and Larvae Using Odor-baited Trap Trees and Entomopathogenic Nematodes: Results from a Six-year Study

Jaime C. Piñero, David Shapiro-Ilan, Daniel R. Cooley, Arthur F. Tuttle, Alan Eaton, Patrick Drohan, Kathleen Leahy, Aijun Zhang, Torri Hancock, Anna K. Wallingford and Tracy C. Leskey 1

2015 Modi Organic NC-140 Apple Rootstock Trial and Drapenet Demonstration

Jon Clements, Elizabeth Garofalo, and Wesley Autio 8

'OrchardWatch' Weather Monitoring Grid at UMass Cold Spring Orchard

Jon Clements, Jim Krupa, Paul O'Connor, Lyndsey Ware, and Daniel Cooley 12

Controlling Bitter Rot in Apple

Win Cowgill..... 17

New Jersey News 19

Cover: A LindaMac on M.9 NAKBT337 anchors the deck at Editor Win Cowgill's orchard location in northern New Jersey, 2020. It is just about ready for Harvest! Photo: Win Cowgill.

Controlling Plum Curculio Adults and Larvae Using Odor-baited Trap Trees and Entomopathogenic Nematodes: Results from a Six-year Study

Jaime C. Piñero¹, David Shapiro-Ilan², Daniel R. Cooley¹, Arthur F. Tuttle¹, Alan Eaton³, Patrick Drohan⁴, Kathleen Leahy⁵, Aijun Zhang⁶, Torri Hancock^{7,8}, Anna K. Wallingford³ and Tracy C. Leskey⁸

¹Stockbridge School of Agriculture, University of Massachusetts, Amherst, MA

²USDA ARS Southeastern Fruit and Tree Nut Research Laboratory, Byron, GA

³University of New Hampshire Cooperative Extension, Durham, NH

⁴Department of Ecosystem Science and Management, Penn State University, University Park, PA

⁵Polaris Orchard Integrated Pest Management for New England, Colrain, MA

⁶USDA-ARS Invasive Insect Biocontrol and Behavior Laboratory, Beltsville, MD

⁷USAMIRIID, Fort Detrick, Frederick, MD

⁸USDA-ARS, Appalachian Fruit Research Station, Kearneysville, WV

Efforts to reduce insecticide inputs against plum curculio (PC) include perimeter-row insecticide sprays applied after the whole-orchard petal fall spray to manage dispersing adults and, more recently, post-petal fall insecticide sprays confined to odor-baited trap trees. Entomopathogenic nematodes (EPNs) can be applied to the ground underneath trap tree canopies to kill PC larvae. These two approaches may provide growers with the opportunity to reduce PC populations by killing both adults and larvae. To quantify the potential to manage this pest more sustainably in a reduced-spray environment, we conducted a 6-year study that aimed at addressing the following questions: (1) does the presence of a synergistic lure in trap trees consistently result in significant aggregation of fruit injury within these tree canopies compared to unbaited tree canopies? (2) can the orchard-wide injury by PC be maintained at economically acceptable levels under a reduced spray scenario involving the trap tree management strategy? (3) does the level of injury received by odor-baited trap trees extend to neighboring trees? and (4) are EPNs applied to the soil underneath trap trees effective at suppressing PC in multiple orchards over multiple years?

Materials & Methods

This investigation was conducted over a 6-year period (2013-2016, 2018-2019) in seven commercial orchards located in Massachusetts (Clark Brothers Orchards in Ashfield; Clarkdale Fruit Farms in Deerfield; University of Massachusetts Cold Spring Orchard in Belchertown), New Hampshire (Apple Hill Farm in Concord; Gould Hill Farm in Contoocook; Poverty Lane Orchards in Lebanon), and Vermont (Scott Farm in Dummerston). Not every orchard participated in this study on each year.

Study 1: Attract-and-kill using trap trees. For each participant orchard, we evaluated two treatments: (1) odor-baited trap tree management strategy; and (2) grower standard plots that received insecticide treatment as prescribed by the grower. Within each orchard, two experimental plots were established. One plot was randomly assigned to the trap tree treatment, and the second plot was selected for grower standard sprays. The average area of experimental plots was 3.6 and 2.8 acres for the trap tree and the grower standard plots, respectively. The same two plots within an orchard were used on each year, but the assignation of trap tree

and grower standard treatments was switched on most years. All orchard plots received a full-block spray of insecticide (most commonly an organophosphate, an oxadiazine, or a neonicotinoid) by the time of petal fall. Subsequent sprays were applied to either, trap trees only in trap tree plots, or as prescribed by the growers in the grower standard plots.

During full bloom on each year, selected perimeter-row trap trees were baited with four benzaldehyde (BEN) dispensers and one PC pheromone (grandisoic acid = GA) dispenser. Each BEN dispenser was suspended inside of an inverted colored plastic drinking cup to minimize the potential negative impact of ultraviolet light on the stability of BEN. All BEN lures were left in place for the entire period of PC activity, while the GA lures were replaced once, typically 4 weeks after initial deployment. The distance between trap trees was 35 yards. On average, there were 3-4 trap trees per acre.

Treatment performance was assessed for each orchard by means of fruit injury evaluations conducted between 23 Jun and 5 July of each year. The total number of fruit with PC oviposition scars was recorded, based on a sample of 25 fruit/tree from trap trees in the trap tree plot and from unbaited (control) trap trees in the grower standard plot. To quantify the level of spillover to trees immediately adjacent to the odor-baited trap tree, 25 fruit per tree were sampled from six peripheral trees (three to the right and three to the left)

next to the trap tree and the control trap tree (in the grower standard plot). To provide a measure of the efficacy of each treatment regime to protect interior-plot fruit from PC damage 20 interior trees (25 fruit/tree) were sampled within each plot. In all, 92,676 fruit were sampled across all years and orchards.

Study 2: Application of entomopathogenic nematodes (EPNs) against PC larvae in the soil.

Here, we evaluated the efficacy of EPN application formulated in water targeting PC larvae in the soil. The performance of EPNs was compared against a water-only control. We used two approaches to measure the number of adult PCs emerging from the soil after EPN application. The first approach involved mini-plot cylindrical enclosures (Figure 1) made of PVC. The enclosures were buried to 7-8 inches deep. After EPN application (see below), a boll weevil trap, consisting of a green plastic cylindrical base, a molded screen cone and a collection chamber, was buried using each enclosure as a 'sleeve'. As they emerged, adult PCs were collected in the collection chamber. This type of



Figure 1. Depiction of the PVC enclosure (left) and pyramidal emergence cage (1 × 1 yards at the base) (center) used for the evaluation of entomopathogenic nematodes (EPNs) in the second study.

experimental arena was used in 2013, 2014, and 2015. The second approach consisted of pyramidal emergence cages (1 × 1 yards at the base) made of PVC and steel screen (Figure 1). One pyramidal emergence cage was placed underneath the canopy of each trap tree (the same tree used for the PVC enclosure). Emergence cages were used in 2013–2015, and 2018.

EPN treatments. We compared the performance of the EPN *Steinernema riobrave* at a rate of 100 IJs/cm² using one gallon of water against the same amount of water alone (control). For the 2013–2015 studies, EPNs were provided by Dr. Shapiro-Ilan (USDA-ARS) while for the 2018 study, EPNs were donated by BASF.

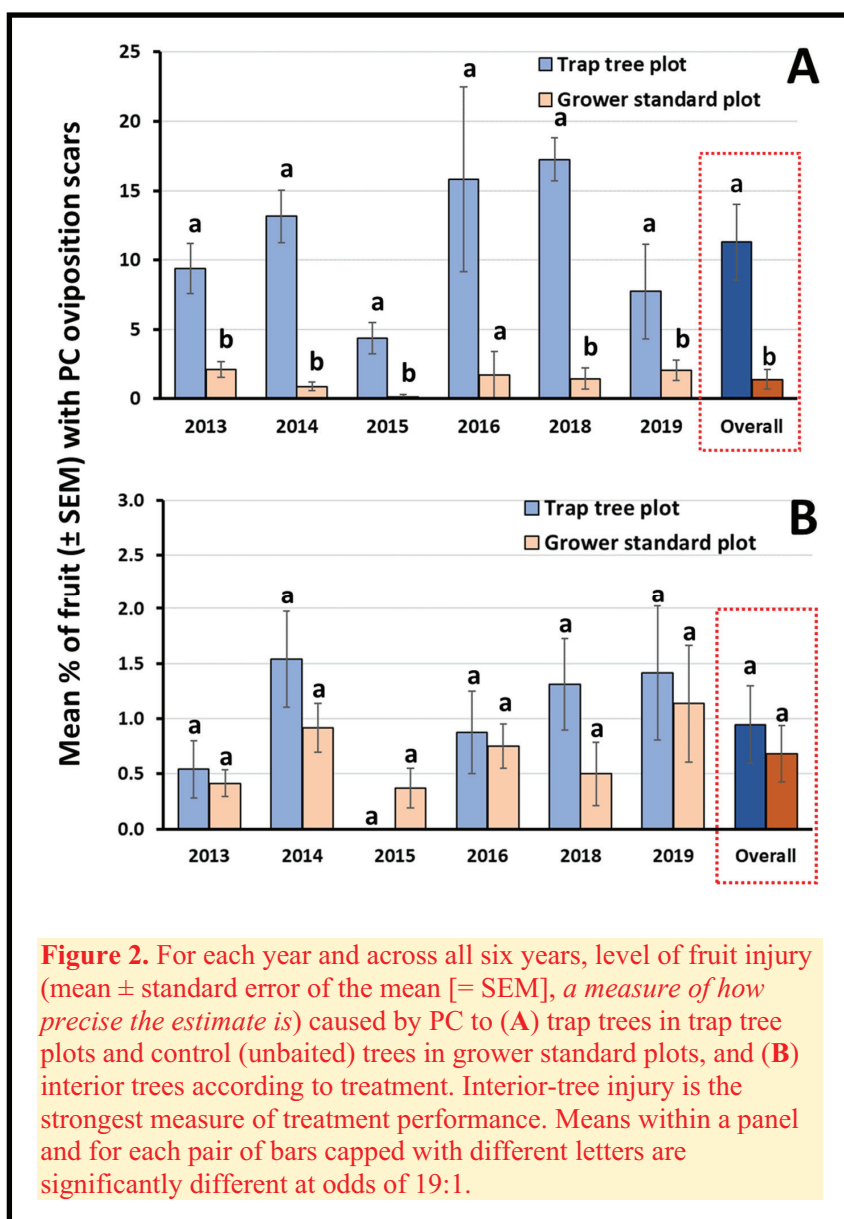
For the PVC enclosures, 30 fully-developed PC larvae were placed inside the enclosures 24 h prior to EPN application. For emergence pyramidal cages, approximately 75 PC-infested fruit were placed on the center of each caged area, 24 h before EPNs were applied, to allow the larvae to crawl in soil. After treatment application, the emergence cages were placed on the ground, covering the fruit, and the edges of the cages were buried in the soil to ensure the emerged adults would not escape. Each of the treatments (three nematode species) and the control were replicated five times. For both experiments, no additional water (except for natural precipitation) was added to the cages. Two weeks after EPN application, the number of adult PCs collected in the experimental arenas (PVC enclosures and emergence cages) was recorded on a weekly basis for four weeks. All insects were counted and removed from the capturing devices.

Results

Study 1: Attract-and-kill using trap trees. For the first question (“does the presence of the BEN+GA lure in trap trees consistently result in significant aggregation of fruit injury in these specific tree canopies compared with unbaited tree

canopies?”), we found that the level of fruit injured by PC within the canopies of odor-baited trap trees ranged from 4.4% (in 2015) to 17.3% (in 2018) in trap tree plots. In contrast, in grower standard plots the level of injury on control (unbaited) trap trees ranged from 0.2% (in 2015) to 2.1% (in 2013). Across all six years, mean percent fruit injury was about eight times greater in trap trees (11.3%) than in control trees (1.4%) (Figure 2A).

The results generated to address question (2) (“can the orchard-wide injury by PC be maintained at economically acceptable levels under a reduced spray scenario involving the trap tree management strategy?”) provided a measure of the efficacy of each treatment regime to protect interior-plot fruit. For each year, and



across all years, the mean percent injury in interior trees located in trap tree plots did not differ statistically from that recorded in plots subject to grower standard sprays (Figure 2B).

For the third question (“does the level of injury spill over to neighboring trees?”), across all years and orchards, the average level of injury caused by PC in odor-baited trap trees (11.3%) in trap tree plots was significantly greater than that recorded in any laterally located peripheral trees (3.7, 2.3 and 1.8%, for adjacent trees, and for trees located two away, and three away, respectively) (Figure 3). In contrast, in grower standard plots the level of injury recorded in the control tree (1.4% on average) did not differ statistically from that recorded in the most adjacent perimeter-row trees (1.2%) or in trees located further away (1.5 and 1.2% for trees located two away and three away, respectively) (Figure 3).

Study 2: EPN Application against PC larvae in the soil. The application of the EPN *S. riobrave* to the soil underneath trap trees consistently resulted in significant reductions in the number of summer-generation PC that emerged from the soil, when compared to the water control. In 2013, 2014, and 2015, significantly fewer adults were recovered from PVC enclosures that received *S. riobrave* compared to the water control (Figure 4A). For emergence cages, significantly fewer

adult PCs were recovered when *S. riobrave* was applied when compared to the water control on each year, except for 2014 due to high variability among samples (Figure 4B).

Conclusions

The present study indicated that, over multiple years and locations (1) odor-baited trap trees consistently aggregated fruit injury by PC; (2) insecticide sprays confined to trap trees only after the petal fall spray resulted in similar level of fruit injury in interior trees, compared to plots that received grower-prescribed sprays; (3) small spillover effects were noted in trap tree plots involving the trees most adjacent proximal to odor-baited trap trees; and (4) the EPNs *S. riobrave* was consistently effective at killing PC larvae. The economic feasibility of using EPNs applied underneath the canopies of trap trees is very promising because, even if high rates of nematodes are applied, such applications would only need to be made to a small proportion of the acreage.

Overall, this study supports a reduced-spray IPM program that integrates the use of synergistic lures and insecticide applications to the canopies of baited trees to kill adult PCs, and one timely EPN application in the areas underneath trap trees, to kill PC larvae.

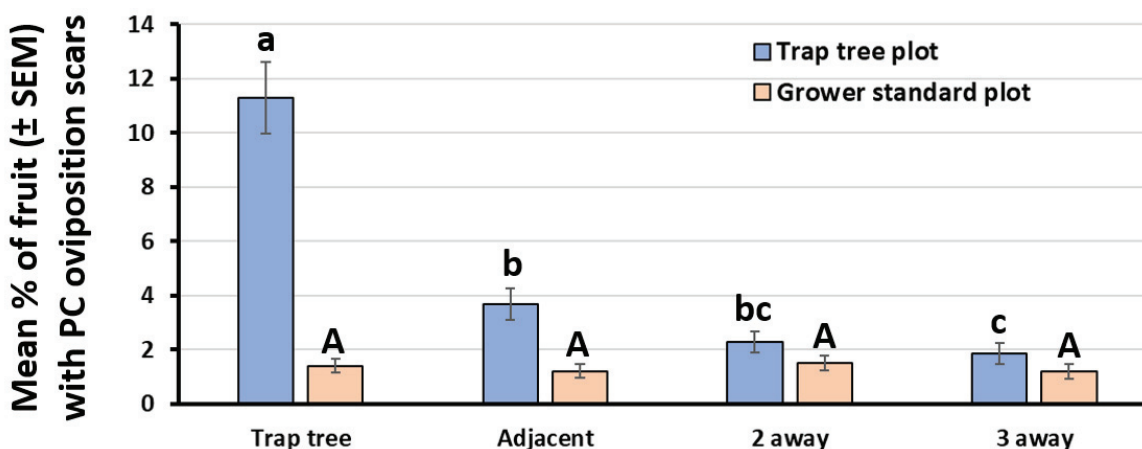
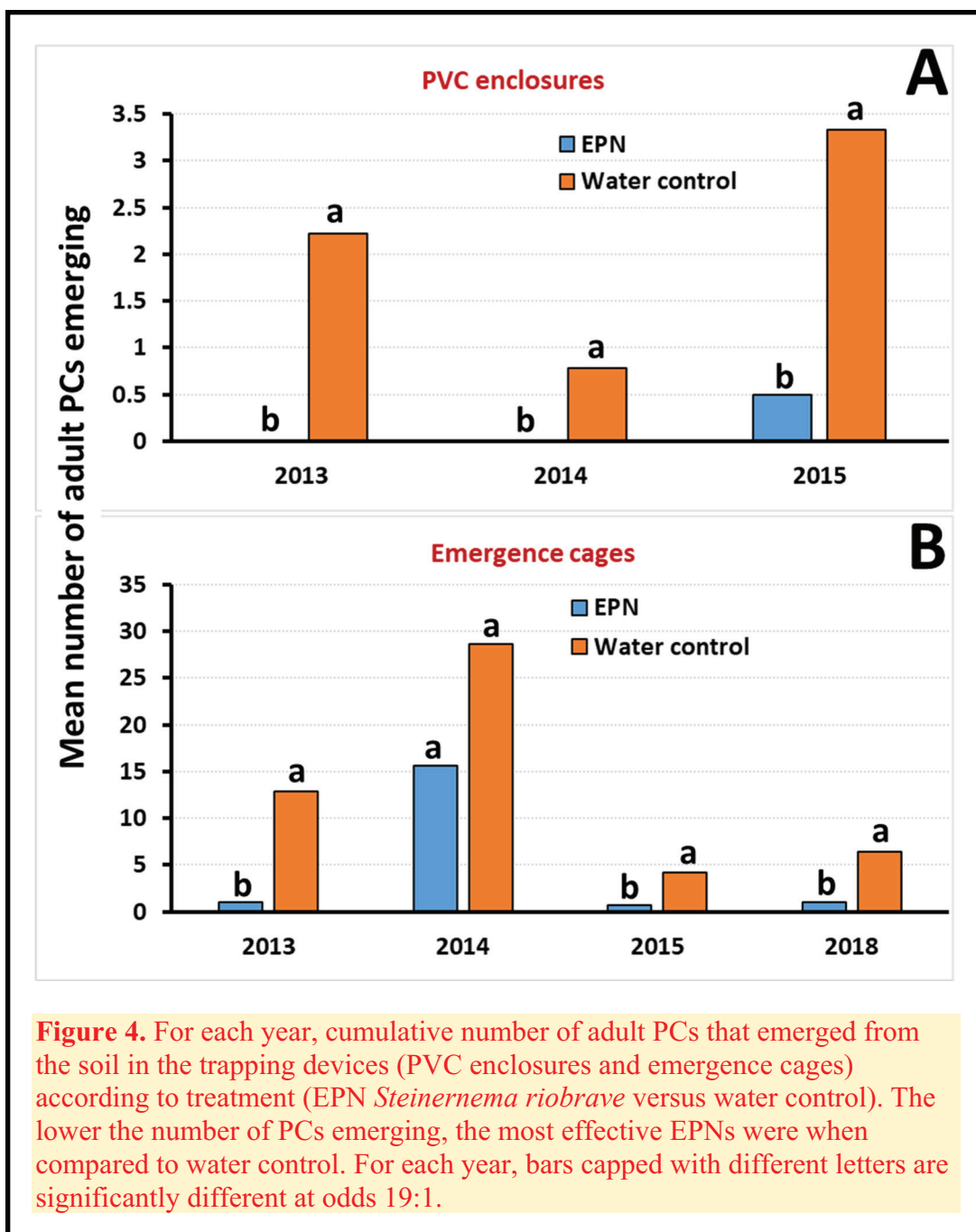


Figure 3. For the quantification of potential spillover effect, level of PC injury (mean \pm standard error of the mean [= SEM], a measure of how precise the estimate is) to fruit sampled from odor-baited trap trees in trap tree plots, from control (unbaited) trees in grower standard plots, and from peripherally located neighboring trees. For each treatment, bars capped with different letters are significantly different at odds 19:1.



Acknowledgments

We express our gratitude to the following apple growers and University orchard staff for kindly letting us use their orchard blocks: Aaron and Dana Clark, Tom

and Ben Clark, Shawn McIntire (in MA), Steve Wood and Chuck Souther (in NH), and Ezekiel Goodband and Glen Schreiter (in VT). We appreciate the donation of *S. riobrave* (Nemasys® R) by BASF, Inc.

LEADER OF THE PAK

REARS

THE MOST POPULAR 3 PT. HITCH WE SELL!

REARS PAK-TANK SPRAYERS

- Stainless steel tanks, mechanical agitation
- PTO shaft driven diaphragm pump
- Variety of booms, guns and hose available
- Excellent for small fruit, Christmas trees and general row crop spraying

**25 TO 200 GALLON SIZE • 3 PT. HITCH OR FRONT MOUNT
STANDARD OR HEAVY DUTY FRAMES**



100 gallon Pak-Tank



Call for a catalog or just stop by

You will always be able to speak to a knowledgeable, friendly person who can help.

www.oescinc.com

800-634-5557

Mon. - Fri. 7 a.m. - 5 p.m. & Sat. 7 a.m. - noon

8 Ashfield Rd./Rt. 116, P.O. Box 540, Conway, MA 01341

THE LEADING SMALL FRUIT NURSERY TODAY!

NOURSE

The Best Berry Plants Since 1932

- *Excellent Customer Service*
- *Wide Variety Selection*
- *Technical Support*
- *Complete Lab Facility
for Tissue Culture
& Virus Indexing*



Strawberries Currants
Brambles Gooseberries
Asparagus Elderberries
Blueberries Rhubarb

NOURSE FARMS, INC
41 RIVER ROAD
SOUTH DEERFIELD MA 01373
413.665.2658

INFO@NOURSEFARMS.COM

NOURSEFARMS.COM



Adams County Nursery, Inc.

Growers of Fruit Tree Nursery Stock

26 Nursery Road, Aspers, PA 17304

acn@acnursery.com • 717.677.8105 • www.acnursery.com



2015 Modi Organic NC-140 Apple Rootstock Trial and Drapenet Demonstration

Jon Clements, Elizabeth Garofalo, and Wesley Autio
University of Massachusetts

This NC-140 (<http://nc140.org>) rootstock planting in a commercial “Certified Naturally Grown” (CNG, <https://www.cngfarming.org/>) orchard gets more disappointing every year. In 2019, now in its fifth-leaf, more trees are dying or failing, and fruit quality and yield in 2019 was pretty abysmal. It is unclear if low fruit set and yields are a result of pollination issues or the “organic” management regimen. In 2018, there were virtually no apples, but the entire rest of the CNG orchard was light too. In 2019, the CNG orchard had a good crop, but these Modi trees had a light to moderate crop (at best) of apples. Another problem was the amount of insect damage, mostly plum curculio and internal Lepidoptera worms (codling moth or Oriental fruit moth), which made the CNG apples quite deformed and small in size. Weed control and fertilization remain organic orchard issues. Our take home to date is that G.890, because of its vigor, is a good choice for organic orchards,

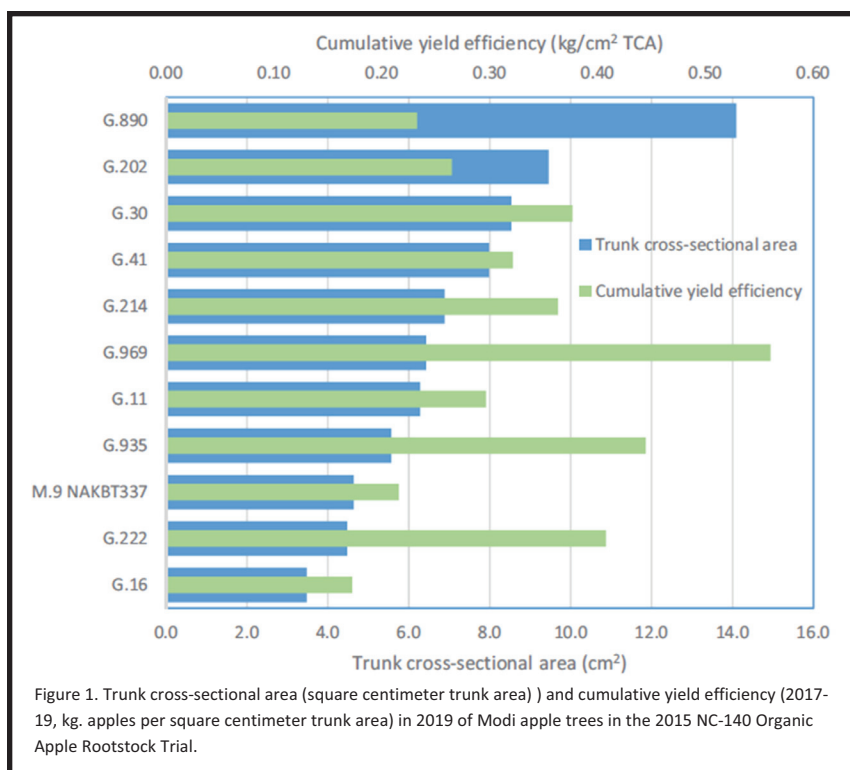
although G.30, G.202, and G.41 are acceptable also (maybe throw G.969 and G.214 in the ring). G.16 is not right in this planting, and M.9 has under-performed. G.935 has some issues, and we are wondering if it is a virus/rootstock/scion interaction? Liberty trees on G.935 planted between replications and as guard trees have all died. Marssonina leaf spot was confirmed in September, and has been causing early defoliation of these Modi trees. Results of tree measurement and fruit yield are presented in Table 1 and Figure 1.

In 2019 a Drapenet (<https://drapenetnorthamerica.com/>) was installed over replications 1-6 (and not 7-12, there are two rows), the primary objective being to see if insect damage could be reduced (there was a lot of hail around in 2019). The Drapenet was installed on May 19, 2020 during late bloom, and was secured to the bottom wire with plastic wire ties. (Figure 2) Inspection of the apples in late June showed that the Drapenet was inef-

Table 1. Tree and yield characteristics in 2019 of Modi apple trees in the 2015 NC-140 Organic Apple Rootstock Trial in a Certified Naturally Grown orchard.

Rootstock	Trunk cross-sectional area (2019, cm ²)	Tree height (m)	Canopy spread (m)	Yield per tree (2019, kg)	Cumulative yield per tree (2016-19, kg)	Yield efficiency (2019, kg/cm ²)	Cumulative yield efficiency (2016-19, kg/cm ²)	Fruit weight (2019, g)
G.11	6.3 cdef	2.7 bc	1.5 bc	0.7 abc	1.4 abc	0.11 a	0.30 ab	102 a
G.16	3.5 f	2.4 c	1.1 cd	0.4 bc	0.5 c	0.11 a	0.17 b	94 a
G.30	8.5 bc	2.9 b	1.5 bc	0.8 abc	1.9 abc	0.09 a	0.38 ab	111 a
G.41	8.0 bcd	2.7 bc	1.3 bcd	0.6 bc	1.8 abc	0.07 a	0.32 ab	115 a
G.202	9.5 b	2.7 bc	1.5 b	0.5 bc	1.7 abc	0.05 a	0.27 b	114 a
G.214	6.9 cde	2.9 b	1.4 bc	1.0 ab	1.8 abc	0.14 a	0.36 ab	97 a
G.222	4.5 ef	2.5 bc	1.1 cd	0.3 bc	1.1 abc	0.09 a	0.41 ab	102 a
G.890	14.1 a	3.3 a	2.0 a	1.3 a	2.3 ab	0.09 a	0.23 b	119 a
G.935	5.6 def	2.4 c	1.2 bcd	0.4 bc	1.9 abc	0.06 a	0.44 ab	109 a
G.969	6.4 cde	2.7 bc	1.3 bcd	0.7 abc	2.4 a	0.11 a	0.56 a	104 a
M.9 NAKBT337	4.6 ef	2.4 c	1.0 d	0.2 c	0.7 bc	0.04 a	0.22 b	101 a

Mean separation within columns by Tukey's HSD ($P=0.05$).



fective at preventing plum curculio damage; however, a more formal harvest survey of 100 fruit per treatment (covered with Drapenet vs. uncovered) for damage showed that internal worms, most likely caused by codling moth or Oriental fruit moth, were greater in the uncovered (35% damage) vs. covered (12% damage) replications. As already mentioned, plum curculio damage was greater in covered (80% damage) vs. uncovered (51% damage). See Figure 3 for an example of what the Modi apples looked like at harvest in terms of insect damage. Interestingly, the incidence of apple maggot fly injury was also greater in the covered (26%) vs. uncovered (5%) apples. Sooty blotch and flyspeck were also greater in the Drapenet apples (59% for sooty





Figure 3. Typical insect damage (and russet, September 2019) on Modi grown in a CNG orchard, including plum curculio, Oriental fruit and codling moth, and apple maggot fly.

blotch, 21% for flyspeck) than the uncovered apples (19% for sooty blotch and 12% for flyspeck). Note that at the UMass Orchard, Modi performs just fine, and in fact, was one of the most beautiful apple crops I have ever seen (Figure 4).

These results are just investigatory, as the covered vs. uncovered was not randomized and replicated for statistical analysis. But a recent article in *Fruit Quarterly* (<http://nyshs.org/fruit-quarterly/>) also showed (research conducted at Michigan State University) that Drapenet is effective at reducing/minimizing flying moth damage (codling moth, Oriental fruit moth, oblique-banded leafroller).

Note that Modi is not available to apple growers outside of a California packing house (<https://modi-appleusa.com/>). It was bred in Italy, a cross of Gala X Liberty and is scab-resistant. It has been marketed in Europe as an enviro-friendly apple (<http://www.modi-apple.com/about-us>).



Figure 4. Modi apple conventionally grown at the University of Massachusetts Cold Spring Orchard, Belchertown, MA, September 2019.

‘OrchardWatch’ Weather Monitoring Grid at UMass Cold Spring Orchard

Jon Clements, Jim Krupa, Paul O’Connor, Lyndsey Ware, and Daniel Cooley
University of Massachusetts

‘OrchardWatch’ is our vision to use remote sensors in an effort to gather as much environmental and visual data as possible at the UMass Orchard in Belchertown, MA. While we, and many growers, collect weather data to help manage orchards and other crops, it is usually limited to a single site on a farm. As a result, pest management and other decisions are made based on what’s happening at that weather station. Conditions around an orchard may be quite different from that one site. For example, a block surrounded by trees may have a longer wetting period than one on the top of an open hill because it takes longer to dry. This may make a difference in terms of managing apple scab and other diseases. Another scenario: degree days may vary significantly enough that insect development will also be slower or faster in different blocks. In general, we are asking the question, do environmental conditions vary enough from place to place that management decisions could be made targeting relatively small sections of an orchard, rather than the whole farm or large blocks?

This is basically what precision agriculture does, treating relatively small parts of a farm individually based on differences in things such as soil texture and fertility. However, much of the effort to develop precision ag methods has been focused on large agronomic crops and the large farms that grow them, rather than so-called “specialty crops”, including apples and other fruit, grown on smaller farms. We want to explore whether it’s feasible to use precision agriculture, particularly for pest management, in New England orchards.

In order to figure it out, we have installed a total of nine “weather sta-

tions” over the past 8 months (September 2019 through April 2020) using Onset Computer Corporation hardware and their Hobolink software to monitor “weather” conditions across 50 acres of the UMass Orchard. (Special thanks to Jim Krupa, Research Technician, for assistance with all the installations.) We are calling this our “Weather Monitoring Grid”, a major component of a larger project, OrchardWatch. OrchardWatch involves significant web-based communication and data collection which can be shared between researchers, growers

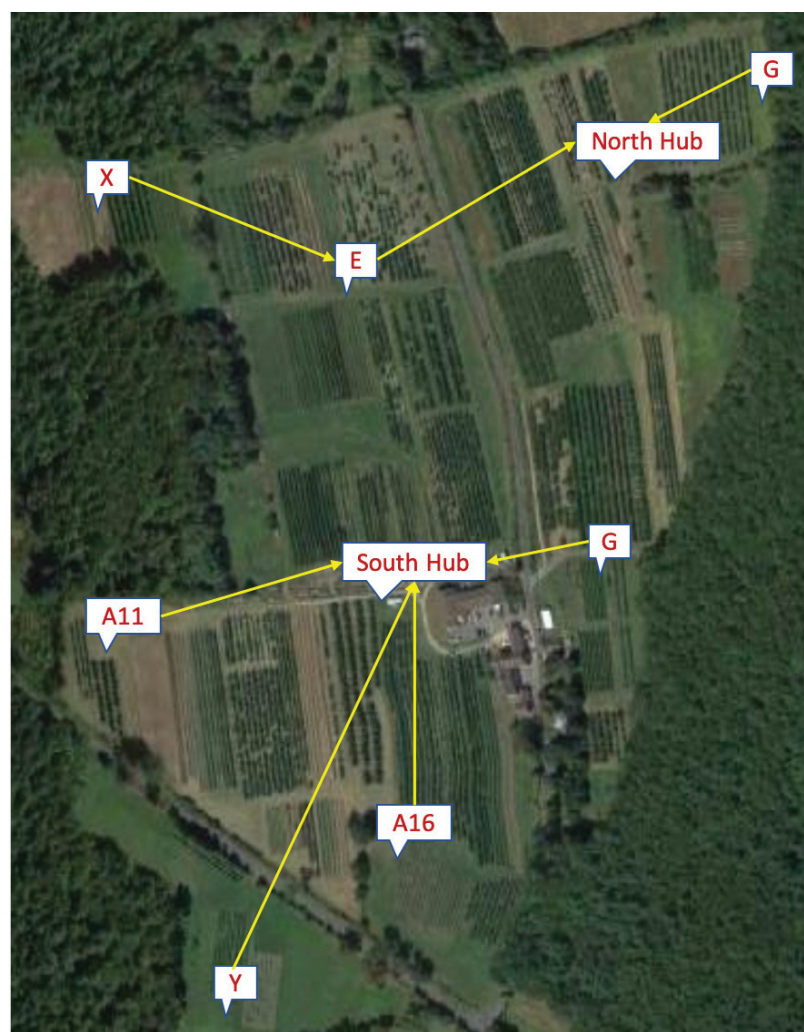


Figure 1. Orchard Watch Weather Monitoring Grid at UMass Cold Spring Orchard, Belchertown, MA.



Figure 2. Four sites at the UMass Cold Spring Orchard showing the Onset RX3000 base station (North Hub, top left), and three different remote stations or “motes” (G, top right; Y, bottom left; X, bottom right).

and the public. The Weather Monitoring Grid consists of two Onset RX3000 logging base stations dubbed “OrchardWatch-North” and “OrchardWatch-South”, plus seven Onset Hobonet Field Monitoring System “motes.” The nine sensor locations vary in terms of

elevation, surrounding terrain and the type of trees, and other crops, being grown. For example, one mote is at the highest point in the orchard surrounded by newly planted trees, and another is at one of the lowest areas with mature trees surrounded on three sides by woods.

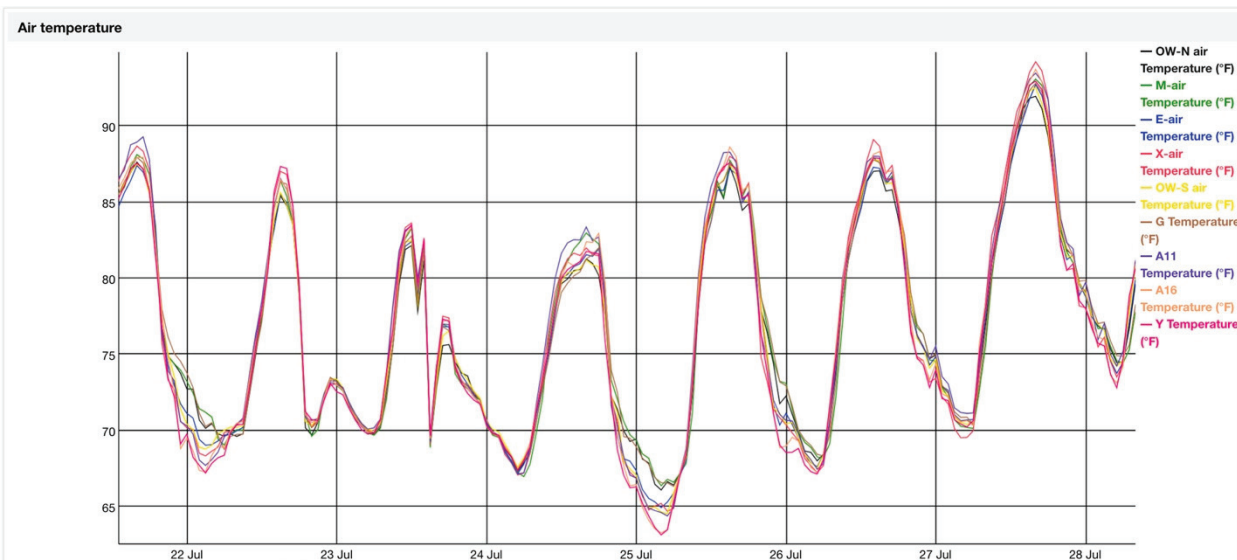


Figure 3. OrchardWatch-Air Temperature for 7 days. Note that there is not a lot of difference in air temperature over time by orchard location. The highest temperatures by site (July 27) ranged from 92.9 to 95.3 F; the lowest temperature (July 25) ranged from 62.7 to 66.2 F. Degree days base 50 F accumulated over the 7 days was very uniform, ranging from 535 to 540.

At each of the nine locations, the Weather Monitoring Grid measures the following environmental conditions:

- Air temperature, relative humidity and dew point at six feet (degrees F.)
- Rainfall (inches)
- Wetness (%)
- Solar radiation (W/m²)
- Wind speed (including gusts) and direction
- Soil temperature (degrees F.)
- Soil moisture (volumetric, m³/m³)

These weather data are logged every 5 minutes and reported to the Hobolink cloud service (hobolink.com) every 10 minutes via cellular data transmission.

We have begun to compare the measurements from the different sites. A very preliminary analysis shows that for air temperature, there isn't much variability between sites. For seven days at the end of July 2020, the average temperature was less than 1°F, ranging from 76.4 to 77.1°F. Accumulated degree days base 50°F, useful for predicting insect development, had virtually no differences, ranging from 535 to 540. On the other hand, soil moisture varied significantly. One site, A11, was particularly dry, with soil moisture content usually below 20%. At the other extreme, sites E and the South Hub were above 40% for most of the week. We will continue to analyze different data with the general

goal of determining whether management decisions in different parts of the orchard might differ.

The Hobolink site provides public data access:

OrchardWatch-South: <https://hobolink.com/p/28ce970fb2430a7eb547758bc6f4aa95>

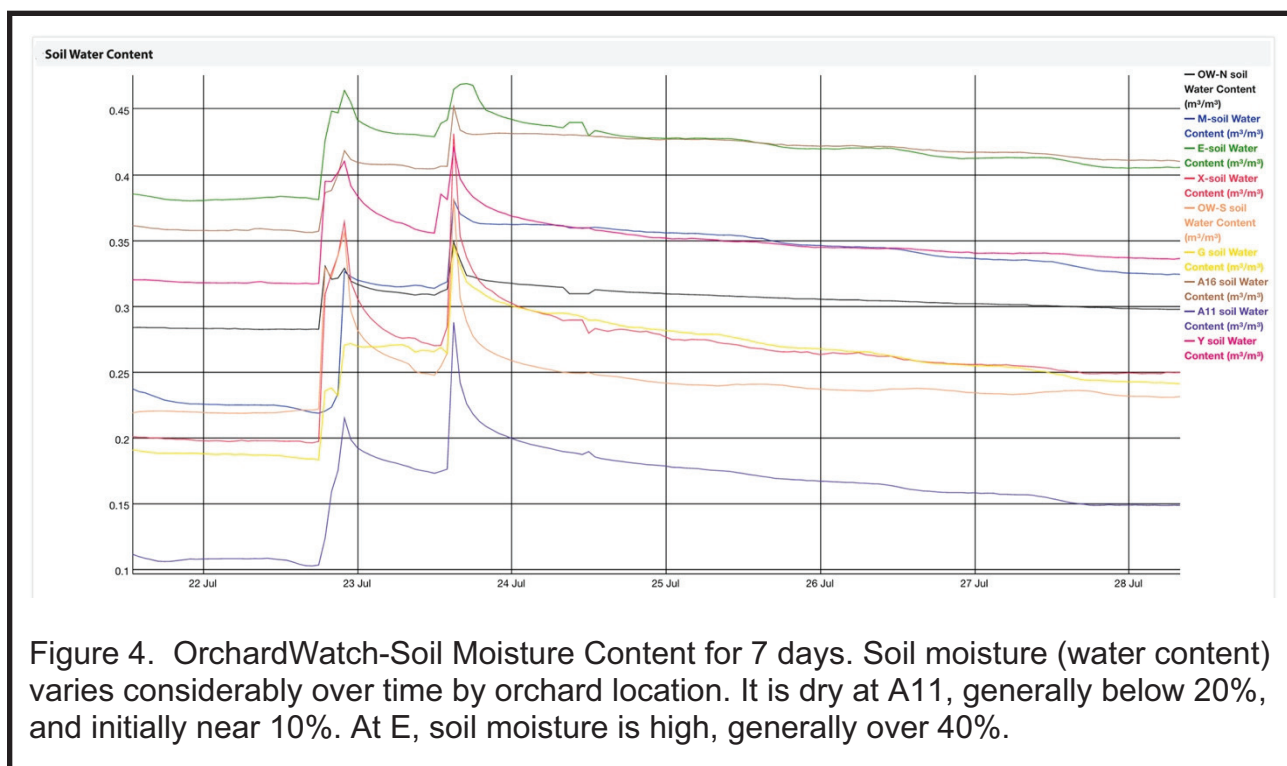
OrchardWatch-North: <https://hobolink.com/p/bd2fa7ebce71003581f2f184ee0b6c12>

We have also launched an OrchardWatch website at orchardwatch.wordpress.com with links to the data.

Both the North and South sites are also on NEWA, the Network for Environment & Weather Applications: http://newa.cornell.edu/index.php?page=weather-station-page&WeatherStation=ma_beow
http://newa.cornell.edu/index.php?page=weather-station-page&WeatherStation=ma_bown

Future plans include installing cameras at each location to capture real time orchard phenology and sky conditions. Cameras might even be able to see pest activity as if one were actually scouting in the orchard. We will investigate machine learning and statistical analysis tools to help develop and improve upon various models such as disease, pest pressure, tree growth and health, etc.

For more information and/or to request weather data, contact Jon Clements (jmcext@umass.edu), Daniel Cooley (dcooley@umass.edu), or Paul O'Connor (proconnor@umass.edu).



Acknowledgements

This project was funded by the Stockbridge School

of Agriculture, Massachusetts Agricultural Experiment Station, and USDA-NIFA-eIP 2017-70006-27137.

Eco-Friendly Insect, Disease, Bird Control

University/USDA tested

Stink Bug Traps
Brown Marmorated and Native Bugs

Insect Traps and Lures
Plum Curculio Trap Tree **Control**,
Codling & Oriental Moth, Cranberry
Pests, **Black Stem Borer**, Others

Honey Bee Lure
Attract Bees - Increase Pollination

Predalure attracts beneficials

Oriental Beetle MD
Mating Disruption
Fruit Crops & Ornamentals

Prestop
New Biofungicide Impressive
Activity. Foliar/Root Diseases

Avex
Bird Control. Apply by ground or
air. Cherries, Blueberries, Sweet
Corn, other crops

*Committed to the Environment and Green Technology
Since 1990*

P. 303-469-9221
agbio@agbio-inc.com
www.AgBio-Inc.com



SUMMIT TREE SALES, INC.
REPRESENTING THE COUNTRY'S FINEST NURSERIES

Your One-Stop Source **For Commercial Fruit Trees**

- *New varieties*
- *Reliable rootstocks*
- *Top quality nursery trees*
- *Decades of industry knowledge*



Matthew Schuld



Jan Melvin



Dawn Melvin

**Your time is valuable,
make Summit your first call!**

800.424.2765

www.summittreesales.com •  Like us on Facebook

Controlling Bitter Rot in Apple

Win Cowgill

Professor Emeritus Rutgers, Win Enterprises International, LLC

Bitter rot is showing up a lot this season/recently, with regular rainfall in NJ and hot temperatures across the Northeast. Bitter rot is caused by the fungi, *Colletotrichum gloeosporioides*, *C. acutatum* and *Glomerella cingulata*. *Colletotrichum gloeosporioides* and *C. acutatum* are the same pathogenic fungi that cause anthracnose fruit rot on strawberry and blueberry, ripe rot on grape, and anthracnose disease on peach. Note that on apple, the skin does not need to be broken for the fungi to enter; however, it often occurs on the fruit exposed to the sun, and is linked to some level of sunburn that has occurred. Honeycrisp is the most susceptible cultivar, followed by Empire. Other varieties susceptible to sunburn are at risk as well.

The fungus *Glomerella cingulata* can also cause a leaf spot/leaf crop and canker on apple, which was an issue in some north Jersey orchards last year, particularly on cultivars with golden delicious parentage, i.e. Golden Delicious, Pink Lady, Pristine.

See Horticulture News (<http://www.horticulturalnews.org/99-2/a4.pdf>) or Fruit Notes (<http://umassfruitnotes.com/v84n2/a4.pdf>), Spring, 2019.

Control. The best controls are to prevent fruit sunburn with one of the protectant sunburn materials; Raynox is best, but the calcium carbonate materials like Pure Shade can help. A regular fungicide program including a protectant like Captan or Ziram + pyraclostrobin has been the most effective. Captan 80WDG should be applied at at least 2.5 lbs./A, with 3-5 lbs./A being better. Watch out for temperatures over 85F with higher Captan rates. Combine with pyraclostrobin (Merivon or Pristine) and phosphoric acid (ProPhyte or others). In the early season, start with Mancozeb at 3lbs./A + phosphoric acid, Merivon, or Pristine. Then switch to Captan, or use Ziram closer to harvest if Captan residue is a concern. See Also: New Considerations for Controlling Bitter Rot on Apples by Dave Rosenberger (<http://blogs.cornell.edu/>



Photo 1. Bitter Rot with some bitter pit.



Photo 2. Bitter rot on apple.



Photo 3. Pruned twigs harboring decay fungi.

plantpathhv1/2017/01/20/). This article (<http://blogs.cornell.edu/plantpathhv1/2020/03/29/spring-clean->

up-for-orchards/) was published July 10, 2017 in Scaffolds Fruit Journal.

Post-harvest/Early-season Control of Bitter Rot.

This information is from Scaffolds Fruit Journal, March 23, 2020. In blocks where bitter rot was a problem last year, remove all fallen fruit, fruit mummies, and pruned twigs from beneath trees and either dispose of them away from the orchard or flail- chop them in row middles to break them down for more rapid decay. Rotted fruit left on the orchard floor over winter have been recognized as inoculum sources since 1903 (Schrenk and Spaulding 1903; also see <http://blogs.cornell.edu/plantpathhv1/apple-diseases/summer-diseases/bitter-rot/>). Twigs pruned from trees last summer or this spring can be colonized by the bitter rot pathogens. Those colonized twigs may produce inoculum for fruit decay in summer.



New Jersey News

Phillips Farms New Farm Market in Milford

Win Cowgill

Professor Emeritus Rutgers University, Win Enterprises International, LLC

Phillips Farms new roadside market is open for business! Located at 564 Milford Warren Glen Road (County Road 519) in Milford (Hunterdon County). The market will be a retail center for all of their tree fruits, small fruits, vegetables, and flowers, as well as PYO for strawberries and a new table grape planting.

Marc and Holly Phillips invested two years of planning into the new facility. When asked why



Marc replied, “We outgrew our small retail stand and needed to expand our local retail presence close to our home farm.”

The next generation of Phillips, Megan and Jason, will be joining the farm operation full time next year. Megan has been instrumental in maturity testing the apple production

over the last two seasons to guide PYO and commercial harvest. All photo credits: Win Cowgill.



Dr. John Gerwig passed April 24, 2020 Longest Serving Cooperative Extension Director in the US

It is with great sadness that I announce the passing of Dr. John L. Gerwig. John passed peacefully at his home in Whispering Pines, NC on April 24 with his loving wife of 23 years, Anne Gerwig, at his side.

John was born in Chapel, West Virginia to the late Jay C. Gerwig and Pearl Perkins Gerwig. He earned a B.S. Degree in Agronomy and a M.S. in Soils from West Virginia University. He received his Ph.D. in Agronomy from Rutgers University, New Jersey. He grew up on a livestock farm in West Virginia and while studying for his master's degree taught vocational agriculture and managed a dairy farm in Uniontown, PA. From 1952 to 1956 he was on the teaching and research faculty at Rutgers University while studying for his doctorate degree. In 1956, he was appointed Extension Specialist in Agronomy for Rutgers Cooperative Extension. In 1962, he was appointed Dean and Director of Rutgers Cooperative Extension, a position he held until his retirement in 1992. At the time of his retirement, he was the longest serving Director of Extension in the Country. He received numerous achievement awards during his lifetime, one of which was the Rutgers University Award which is the highest award given by Rutgers University and given to a

very limited number of recipients.

John touched the lives of thousands of people during his long and meritorious career of 40 years at Rutgers University. He was a great friend of the agricultural community and was revered as a champion of his faculty, many of whom he hired during his more than three-decade tenure as the Director of Rutgers Cooperative Extension.

In the late 70's and 80's, Dr. Gerwig hired a whole slew of us extension agents to name a few R. Barbour, E. Barbour, Samulis, Obal, Cowgill, Schutski, J. Repair, D. Lee, Rabin, Pavlis, Flimin, Johnson, VanVranken, Tweed, Costaris, Liptak, Franco, Chamberlin, Frecon, Kluchinski, and probably a few others.

His kindness, caring demeanor, and fantastic sense of humor and wit will be sorely missed.

John's obituary may be viewed at www.bolesfuneralhome.com. Memorial Contributions may be made to The John and Anne Gerwig Director's Endowment for Rutgers Cooperative Extension, Rutgers University Foundation, 7 College Ave, Winants Hall, New Brunswick, NJ 08901 or to First Health Hospice at 150 Applecross Rd. Pinehurst, NC 28374.

Coles Roberts of Vincentown Passed August 12, 2020 at 94

Samuel Coles Roberts passed away peacefully on Wednesday, August 12, 2020. He was 94 years of age. Born in Mt. Laurel, NJ, he is the son of the late Emmor and Marion (Coles) Roberts and the husband of the late Virginia (Perry) Roberts. He has resided in Medford Leas since 2010, moving there from Southamptn, NJ, where he resided since

1936. Known best for Jersey Jerry Apples, Coles was a fruit grower who owned and operated Roberts Orchards in Southamptn. He was also a long-time member and officer of Jersey Fruit Cooperative, the B.C. Farm Fair Board. Coles served as a curator for the NJ Museum of Agriculture in New Brunswick and was past president of Flying Farmers of NJ.

Coles was well known for his Public Presentations, and his film "From Blossom to Bite." In his retirement, he used to travel around to county fairs and other events with his antique apple peeling machines and discuss "the art of apple carving and peeling."

He loved history and genealogy, but his greatest passion was people. He is the beloved father of Sidney Lee Roberts, husband of Carol of Southamptn, NJ, loving grandfather of Kathryn Swogger (Thomas) of

Vincentown, NJ, Deborah Bonhomme (Jesse) of Southamptn, NJ, Brian Roberts (Jamie) of Williamstown, NJ, Jennifer Roberts, and Philip Roberts (Melinda) all of Southamptn, NJ, great grandfather of 9, and beloved friend of Virginia Tazza. In lieu of other expressions of sympathy, the family requests memorial donations to the Medford-Vincentown Rotary

Foundation, P.O. Box 365, Medford, NJ 08055. Include "The Coles Roberts Humanitarian Scholarship" on the memo line. (www.BradleyStow.com)

Editor's Note from Win Cowgill: I knew Coles Roberts a bit, and he was a wonderful man.

We often talked at the NJ Agricultural convention. My Grandfather Cowgill worked for Coles grandfather managing one of their orchards. I was told that orchard was located where Exit 4 is now on the NJ turnpike. I never met my Grandpop Cowgill, he died very young (in his 40's) but learned some about my grandpop from Mr. Roberts. My Grandmom Cowgill lived in Vincentown all her adult life. She often took us to Coles Jersey Jerry Apples self-serve roadside market in Vincentown. I believe it was one of the first self-serve markets in NJ.





Fresher, Sweeter, Juicier

Peaches From Circle M Farms



*Exceptional quality and flavor at attractive prices
Brought to you from the 4th generation family
farm of Santo John Maccherone*

- PLU Stickers Available Upon Request
- Low in Calories
- Nutritious and Delicious
- Exceptional Flavor



SANTO SAYS...

"Peaches from Circle M Farms just plain taste better. Their size and color are what your customers want, and their flavor is the icing on the cake.

That's because our orchards are tended with care and attention, and their fruit is left on the tree to ripen naturally until they reach their optimum sweetness. Then they are picked by hand, taste-tested by me to ensure quality, and packed gently into

25 lb. volume boxes for shipping. Single layer cartons are available upon request.

Circle M's 30 varieties of peaches and nectarines are known for their sweetness and their luscious color. They look as good as they taste.

Discriminating customers appreciate our white flesh peaches because of their lower acid levels and supremely sweet taste.

Add it all up: Peaches from Circle M Farms are fresher and sweeter, picked by hand when their time has come, and packed with care for a longer shelf life.

Yellow, white and donut peaches and yellow and white nectarines are available early July to late September."



**Call us at 856 856 207-4542 or
609 381-6465. Fax your order to
856 878-0404**



Available in 16 oz. and 64 oz. sizes

**Made from fresh New Jersey Peaches
"Peach Cider Drink, Peach Salsa, Peach
Preserves"**

Santo John Maccherone
circlemfarmsllc@gmail.com

Circle M Farms
88 Sandy Ridge Road
Salem, N.J. 08079



Horticultural News

New Jersey State Horticultural Society
176 Airport Road
Hackettstown, NJ 07840