

2024 North Jersey Tree Fruit IPM Report

Kaitlin Quinn

North Jersey IPM Program Associate, Rutgers University

Megan Muehlbauer

Associate Professor, Agriculture & Natural Resources County Agent II, Rutgers University

Dave Schmitt

South Jersey IPM Program Associate, Rutgers University

Win Cowgill

*Professor Emeritus Rutgers University
Win Enterprises International, LLC*

Observation Overview: The IPM observations for 2024 come from the North and South Jersey Tree Fruit IPM Programs. There are 29 farms that participate in the North Jersey program and 13 farms in the South Jersey Program. The program includes approximately 600 acres of apples and 1,650 acres of peaches. Each farm has traps for the pests included in the trap data and are scouted once a week. The data for the charts below comes from the NEWA model <<https://newa.cornell.edu/>> using the Rutgers Snyder Research and Extension Farm in Pittstown as the weather station source (. The trap data comes from each of the farms in the program and excludes farms using mating disruption. This is because the mating disruption proved to be very effective this year and I had no or very low trap catches in orchards utilizing this method of control.

2024 Weather: Using the NEWA weather data from our Rutgers Snyder Research and Extension Farm in Pittstown, New Jersey (Hunterdon County) as the data source <https://www.njweather.org/station/289>

Overall, the weather (highs, lows and precipitation), was average for the 2024 growing season. There were very few statewide frost events in the spring however,

in our most northern counties we experienced temperatures of 27°F on 4/8/2024 (during tight cluster) and again on 4/22/2024 (during bloom) which affected some of the blossoms and potentially impacted chemical thinning. Overall, most northern NJ growers had excellent apple and peach crops. However, the high temperatures were sustained above 80 °F for much of June through August. **Temperatures 89F or higher totaled 23 days in 2024.** June 20, 21, 22, 23, 26, July 4, 5, 6, 7, 8, 9, 10, 13,14, 15,16,17, August 1, 2, 3, 5, 6, 28.

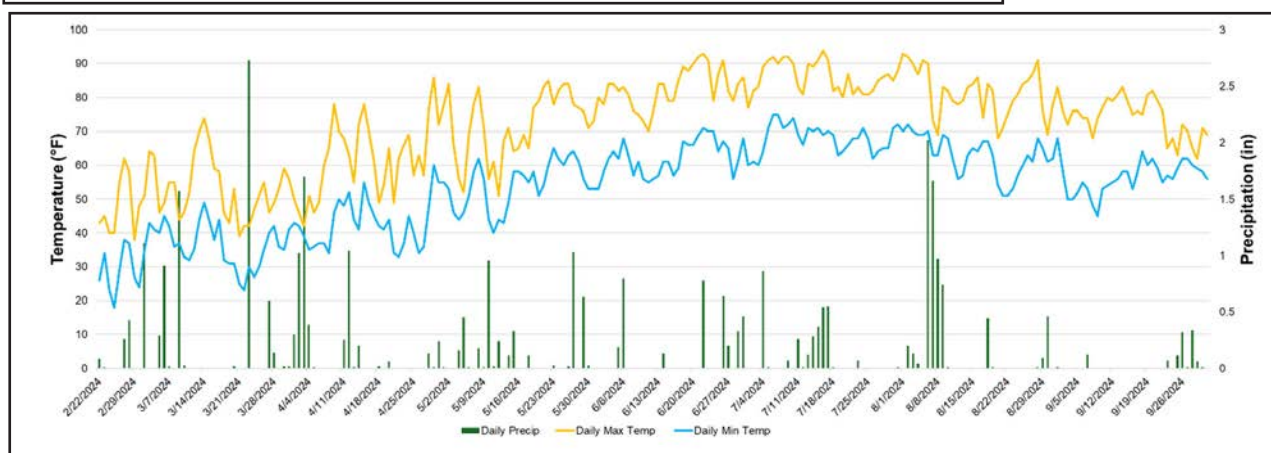
Temperatures over 89F with full sun enhance the potential for sunburned apples, which greatly increases the potential for the disease bitter rot.

Precipitation was above the 20-year normal until May and then dropped to about half of normal from June-July, then seemingly increased in August but that was largely due to a very large squall that occurred at the Pittstown research station at the beginning of August. Extreme drought has occurred in most of northern NJ with less than 1.3 inches at the Pittstown Station Sept 1- Nov 17, less in other counties.

Additionally, a hailstorm occurred in Sussex and Warren counties on 7/16 which resulted in significant crop loss for some growers.

	March	April	May	June	July	August	September	October	Nov 1-Nov 17
Hunterdon, NJ: 30 year normal precipitation	4.05	3.92	4.18	4.55	5.04	4.61	4.53		
Hunterdon NJ: 2024 precipitation	6.89	4.97	4.16	2.21	3.28	6.83	1	0	0.34

enced more scab infection periods during the primary scab phase. Most of these infection periods spanned over a couple days with the longest period lasting 5 days. Most growers



Data sources:

https://climate.rutgers.edu/stateclim_v1/nclimdiv

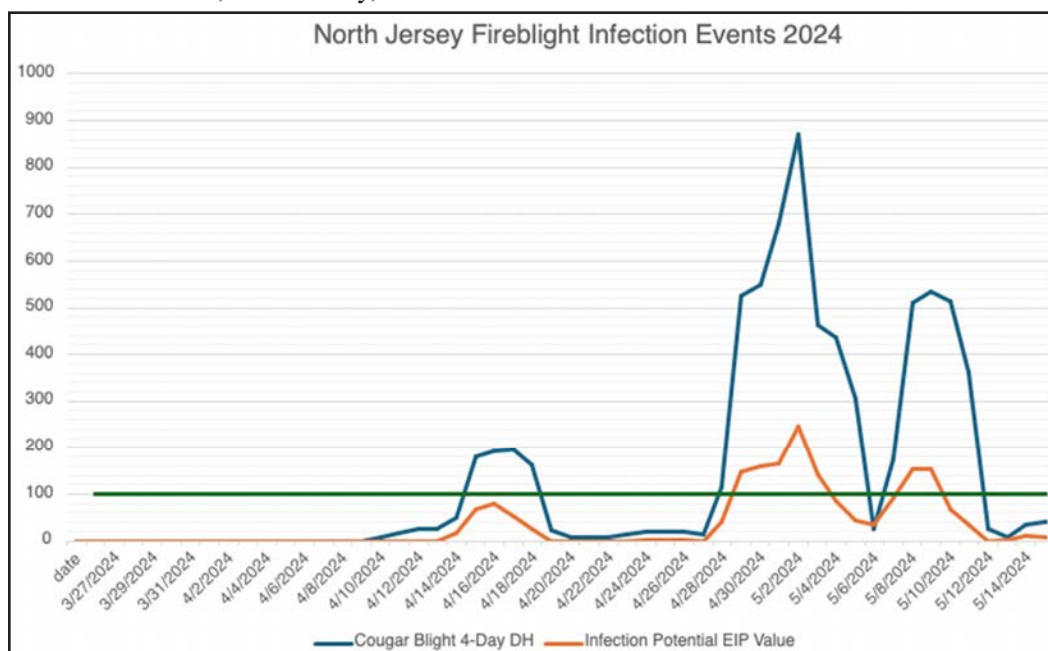
<https://www.njweather.org/data/daily>

Fireblight: Fireblight presented an issue during the blossom blight phase for growers in both North and South Jersey. As you can see from the chart below, which pulls data from the NEWA fireblight model using the weather station in Pittstown, New Jersey, there were at least two infection periods during bloom where the EIP value was over 100. One of these periods persisted over the course of 5 days which required two applications of an antibiotic, 3 days apart from each other for optimal control.

Apple Scab:

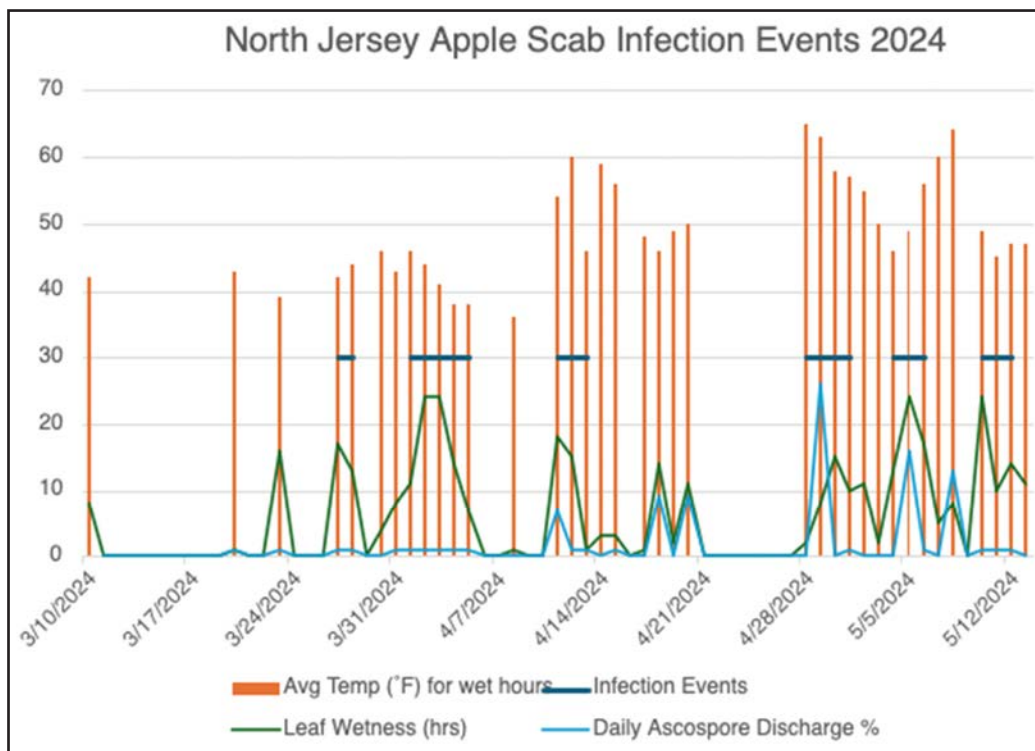
Compared to last year, we experi-

were able to avoid primary scab by applying effective fungicides prior to NEWA predicted infection periods. There were a few orchards with heavy scab pressure that experienced major scab outbreaks with over 20% infected fruit found in post-harvest assessments. If growers experienced heavy scab pressure this year, it is recommended to apply urea and mow the leaves



once they have fallen from trees to reduce the inoculum moving into the next season.

Rots: Bitter Rot of apple fruit and Glomerella Leaf Blotch have been most challenging to control throughout all New Jersey orchards. Incidence of these diseases occurred in almost all farms in our Tree Fruit IPM Program and appeared most devastating in the Honeycrisp, Empire, Ambrosia and Evercrisp varieties.



It will be beneficial to remove infected apples from the trees at the end of this season to reduce inoculum as well as leaves and mummied fruit under the tree. Specific horticultural programs and spray schedules will be outlined in a separate article for Bitter Rot and Glomerella. Glomerella can also become a fruit rot, [Glomerella Leaf Blotch](#) (Bitter Rot), caused by the sexual stage of the fungus. We first observed it in northern NJ in 2019.

Fungicide programs for Bitter Rot: After 1st cover it will be essential to have a contact fungicide combined with specific systemic fungicides in each cover. After 1st cover the choice is usually Captan in every cover spray combined with a short list of systemic fungicides in each spray; Aprovia Frac 7, Omega Frac 29, Merivon Frac 11+7, Luna Sensation Frac 11+7. It is essential these be applied before wetting events and before fruit infection. In South Jersey, White Rot was also prevalent this season, we did not experience white rot in our North Jersey counties.

Cedar Apple Rust and Quince Rust: In Southern New Jersey these diseases, particularly Quince Rust, are becoming more prevalent, especially in Asian Pear. In North Jersey, we also saw a higher incidence of these diseases compared to last season. It is important to

begin applying effective materials from pink through first cover.

Nectria Canker: This disease has not presented a major issue in New Jersey in previous years and when it has shown up, it has typically been on varieties that are known to be susceptible. This year one grower experienced this disease on the MAIA variety, Ludacrisp. Almost every tree in the row was infected with multiple cankers per tree. In New Zealand for control of Nectria Canker, apple trees are sprayed with Captan from harvest to leaf drop and then several applications of a Copper Hydroxide like Champ, Kocide 3000 and NuCop (Personal Communication Dr. Srdjan Acimovic, VPI).

Bacterial Spot: In South Jersey control of this disease was very good. In North Jersey there was more incidence of this disease than last year with 4 farms having minor outbreaks. Growers should begin including effective materials for this disease at late petal fall or early shuck-split stage and continue on a 7-to-14-day interval throughout the summer. Shorter application intervals should be used when rainy periods are frequent, and temperatures range from 75F to 85F. A longer 14-day interval is acceptable during extended periods of dry weather. The most effective program is a low dose copper program worked out by Dr. Norm

Lancette in 2014, see: Copper Bactericides for Peach Bacterial Spot Management. Do not apply copper if temperatures are above 85F. <http://plant-pest-advisory.rutgers.edu/copper-bactericides-for-peach-bacterial-spot-management/>

For resistance management growers should add oxy-tetracycline (Fireline or Mycoshield) in cover sprays to the copper if they will be applied within 24-48 hours before a rain. Longer than that sunlight breaks down the oxytetracycline.

It is important to remember that combining copper and captan may cause phytotoxicity to the leaves which may be exacerbated in slow drying conditions.

Peach Scab: Control of this disease remains very good in commercial orchards across both North and South Jersey.

Brown Rot: This disease did not present a major issue in North or South Jersey this season. In North Jersey, most growers had less than 2% crop loss caused by brown rot.

Codling Moth: In South Jersey, a biofix was set for this pest on 4/22 which is 3 days later than last year. A biofix was set for this pest on 5/1 for five North Jersey counties (Middlesex, Mercer, Hunterdon, Warren, and Sussex counties) and on 5/6 for one North Jersey county (Morris County) which is 3-4 days earlier than last year. Across the state, trap captures were lower than average, but this pest was more damaging than last year. This season, all 3 generations of this pest caused damage in orchards which are known to have high pest pressure. Mating disruption remained effective in most blocks, but small amounts of damage were found at one farm which had irregularly shaped blocks. In Southern New Jersey, over the last 3 seasons there has been incidence of another internal feeder which is believed to be lesser apple worm. In North Jersey damage of this pest was noted in one orchard on 10/15.

Brown Marmorated Stink Bug: In both North and South Jersey, trap counts for this pest were higher than the past few seasons. There was also a higher incidence of damage found in post-harvest assessments of Pome fruit. In North Jersey, there was also a higher incidence of damage to Stone fruit compared to last season.

Ambrosia Beetle: In North Jersey, we began a monitoring program for this pest this year utilizing clear sticky traps baited with Trece's ethanol lures and wood dowel traps. We had significant trap captures, and this pest attacked the wood dowel traps at all 29 farms in our program. This pest only attacked apples at 4 of the 29 farms, 3 of which were previously known infestation sites. The one farm which had not previously experienced crop loss to this pest experienced 43.3% loss of the trees they had topworked at the beginning of the season. In South Jersey, tree loss continued at normal levels in known infestation sites. The best management practice for control of this pest is reducing tree stress through cultural techniques meaning correcting all drainage issues prior to planting, and managing drought stress with well monitored and timed adequate irrigation.

Scale: White Peach Scale was observed at slightly increased levels in orchards across the state. The late generation of this pest continues to cause damage to later ripening peach varieties in North Jersey. Dormant oil sprays at the beginning of next season will help manage this pest. Ensuring proper coverage of these sprays is essential for control. In North Jersey, this pest did not cause notable damage except in known problem areas. In South Jersey, incidence of San Jose Scale infestation increased over the last season. Early season controls suppressed crawler populations, however, damage in August was notable in many orchards.

Oriental Fruit Moth: A biofix for this pest was set on 4/10 in South Jersey and 4/12 in North Jersey. This pest did not present a major issue to growers across the state this season. Only a few growers had a small incidence of damage to their peaches found in post-harvest assessments.

Plum Curculio: Plum curculio damage was above average in stone fruit. This pest also caused significant damage to pome fruit due to the long bloom period which made control difficult.

Lesser Peach Tree Borer and Greater Peach Tree Borer: It is now recommended the New Jersey growers use mating disruption to control this pest due to the loss of other effective methods.

References:

- 1) Compendium of Stone Fruit Diseases, 1995 APS, Pages 28-29
- 2) <http://plant-pest-advisory.rutgers.edu/copper-bactericides-for-peach-bacterial-spot-management/>
- 3) Fungicides for European Canker (Personal Communication Dr. Srdjan Acimovic, VPI)
- 4) Cowgill, Win, 2019. Glomerella Leaf Blotch and Fruit Rot: New Apple Diseases in the Northeast. [Horticultural News, Volume 99, NO 3, P.20 Spring, http://horticulturalnews.org/99-2/a4.pdf](http://horticulturalnews.org/99-2/a4.pdf)



Honeycrisp with bitter rot

OESCO IS YOUR PARTNER IN PRUNING

Manual, electric, anvil & bypass pruners, pneumatic loppers & more



From brands you know & trust, including:



Whether you're pruning landscapes, invasives, fruit trees or shrubbery,

CALL OESCO.

We've got what you need.

Accurate cutting, super-sharp blades

High quality materials

Durable, long-lasting tools

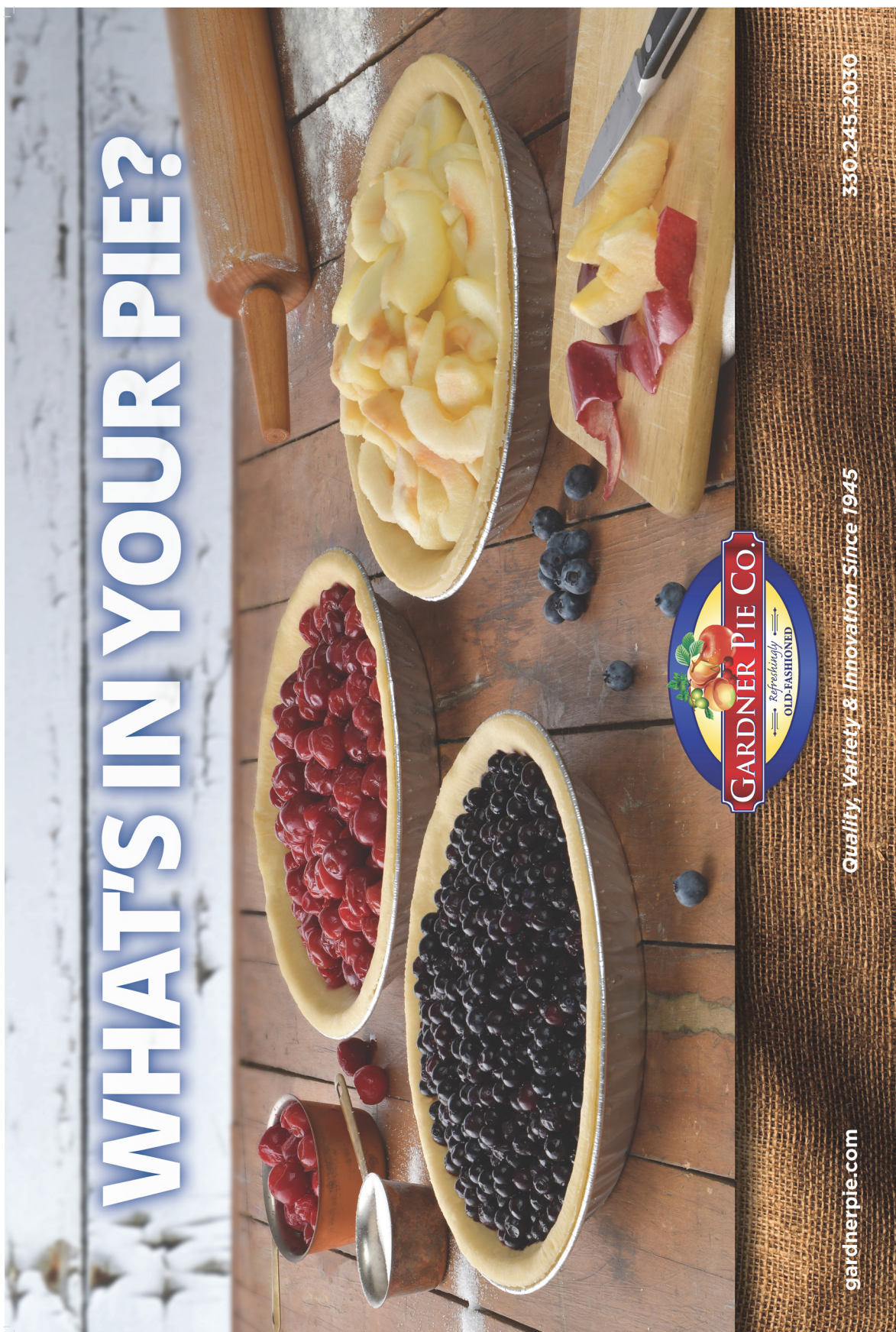
Ergonomic & low impact



Call us for a catalog
800-634-5557
www.oescoinc.com

OESCO, Inc. PO Box 540 / 8 Ashfield Road, Route 116 Conway, Massachusetts 01341

WHAT'S IN YOUR PIE?



GARDNER PIE CO.
Refreshingly
OLD-FASHIONED

Quality, Variety & Innovation Since 1945

330.245.2030

gardnerpie.com